



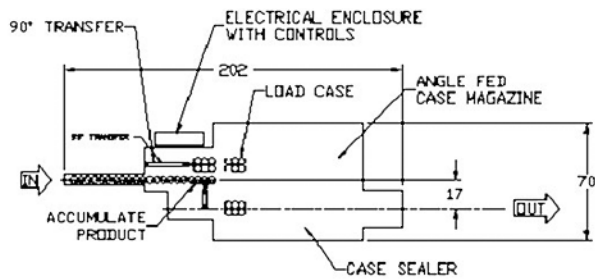
T.A.D. Packaging Machinery, Inc. LS28BLT Automatic Bottom Loading Case Erector-Packer-Sealer



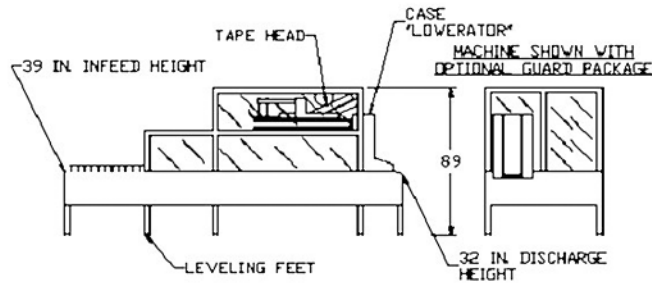
The T.A.D. Packaging Model LS28BLT is engineered with the same quality and precision craftsmanship as its predecessor the IS60SLG. Built with a unique design where compactness and flexibility is a concern. Pack patterns cannot always be changed and some products must be packaged upright in a corrugated container. That is why T.A.D. Packaging designers provide a bottom-loading case packer with speeds to 15 cases per minute.

Once a knocked-down corrugated case is pulled from the magazine and opened, the product is accumulated into its pack pattern and transferred 90° in preparation for loading. This allows for more product to be accumulated simultaneously. The product is swiftly funneled upward through the bottom of the case where it is transferred for top and bottom sealing. The bottom load case packer has quick, accurate placement of the product and case, thus meeting production requirements. Due to the nature of design, case discharge is usually higher than normal line heights. T.A.D. Packaging can remedy this by using an optional case “lowerator” which can lower the case down to a standard line height in a minimal amount of floor space.

T.A.D. Packaging Model LS28BLT provides an economical solution to bottom-load case packing with a tough, durable machine and dependable output you can rely on.



PLAN VIEW



ELEVATION VIEW

STANDARD FEATURES

- Speeds to 20 cases per minute (Contingent Upon Receipt of Customer Samples)
- Heavy-duty painted (OSHA blue) steel frame
- Angle fed knocked-down case magazine (holds approximately 160 blanks)
- Automatic case pull down and erector station
- Positive case opening using opposed vacuum cups
- Product infeed conveyor (approx. 7 feet long)
- Reciprocating product loading funnel
- Heavy-duty linear shaft and ball bushing air cylinder support guides
- S.V. Dice Designers solid state glue programmer
- Programmable logic controller
- Basic self diagnostics (light and buzzer)
- NEMA 12 electrical wiring with 120 VAC controls
- Motor voltage of your choice Single point air and electrical hook-up with lockout/tagout (glue system may be separate)
- Nip and pinch point guarding Infeed packing line height of your choice
- Case packer infeed and discharge orientation of your choice
- Aluminum or plated case contact parts
- Choice of hot melt, cold glue, or pressure sensitive tapets
- Choice of hot melt, cold glue, or pressure sensitive tape

OPTIONAL FEATURES

- Extended knocked-down case magazine
- Stainless steel construction
- Heavy duty casters
- Color touch screen with self diagnostic display
- Full lexan guarding with electrical interlocks
- Many other options available on request.



T.A.D. Packaging Machinery, Inc.
 10759 Civic Center Drive, Rancho Cucamonga, CA 91730
 Phone (909) 476-0503 / Fax (909) 476-0573
www.tadpackaging.com